

Foldable Shipping Containers for Sustainable **Blue** Growth

#ZboxBlueLogistics



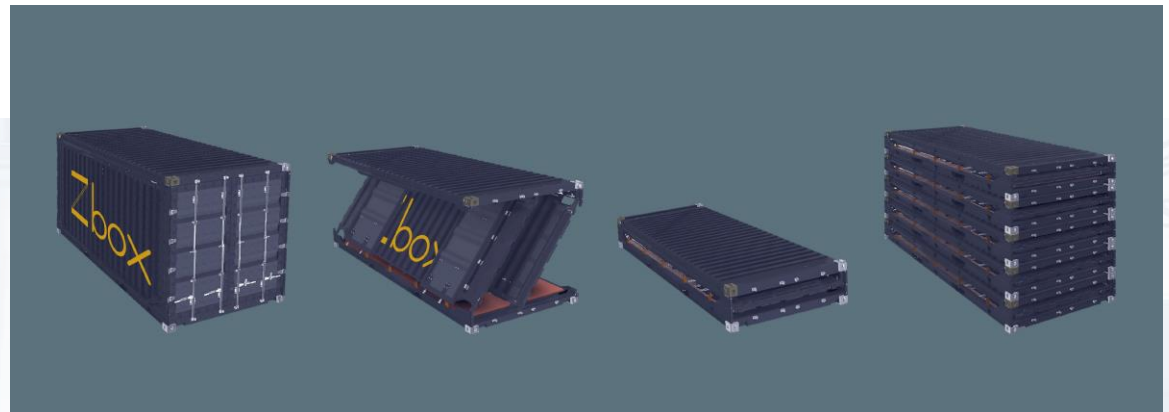
MISSION

Zbox Blue Logistics project aims to **demonstrate Zbox benefits across a wide validation plan**, covering both:

- i) On-route performance to quantify savings, and
- ii) PAYS (Pay-As-You-Save) business model to be showcased.

Zbox

Zbox is a new generation of foldable freight container, ISO and CSC certified, developed by Navlandis.



DURATION

From 1st October 2020 until 30rd september 2022. Total: 24 months

EC CONTRIBUTION

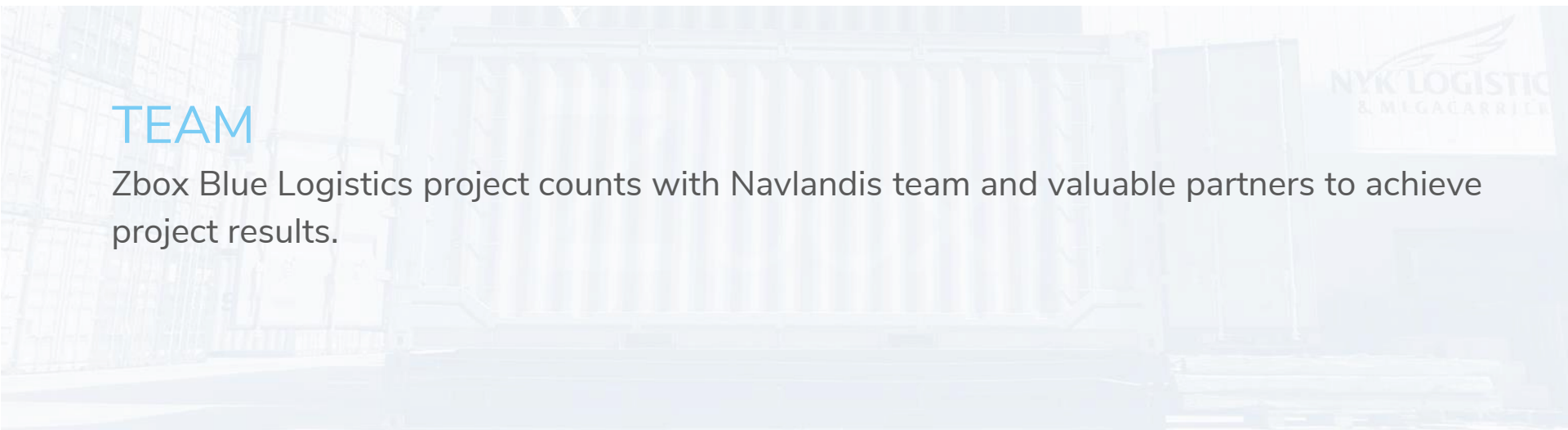
Total budget: 3.082.242,00€

EC contribution: 2.157.569,40€ (70% of total budget)

Under Grant Agreement no. 958961

TEAM

Zbox Blue Logistics project counts with Navlandis team and valuable partners to achieve project results.



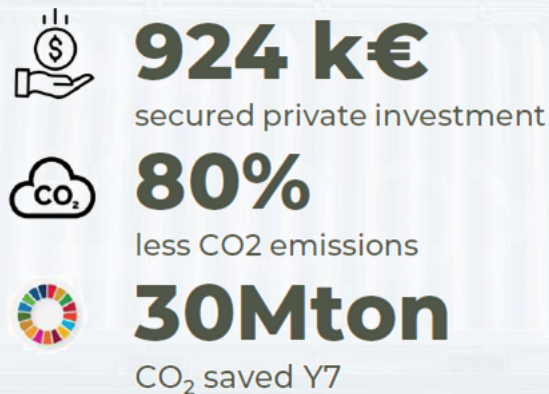
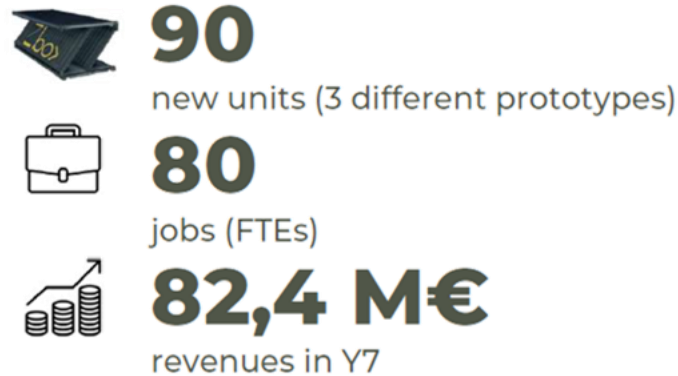
WORK PACKAGES

Zbox Blue Logistics tasks have been organized into 5 work packages, distributed in time as shown in the table:

| ACTIVITY | MONTHS | | | | | | | | | | | | | | | | | | | | | | | | | |
|--|--------|-----|-----|-----|-----|-----|-----|-----|-----|------|------|------|------|------|------|------|------|------|------|------|------|------|------|------|-----|--|
| | M 1 | M 2 | M 3 | M 4 | M 5 | M 6 | M 7 | M 8 | M 9 | M 10 | M 11 | M 12 | M 13 | M 14 | M 15 | M 16 | M 17 | M 18 | M 19 | M 20 | M 21 | M 22 | M 23 | M 24 | | |
| WP1- PROJECT MANAGEMENT | | | | | | | | | | | | MS1 | | | | | | | | | | | | | | |
| 1.1. Coordination. | | | | | | | | | | | | | | | | | | | | | | | | | | |
| 1.2. Risk Management | | | | | | | | | | | | | | | | | | | | | | | | | | |
| WP2- OPERATIONAL VALIDATION | MS2 | | | | | | | | | | | | | | | | | | | | | | | | | |
| 2.1. Zbox v3 manufact. | MS2 | | | | | | | | | | | | | | | | | | | | | | | | | |
| 2.2. Operational validation | MS2 | | | MS2 | | | | | | | | | | | | | | | | | | | | | | |
| 2.3. Upgrade to V4 | | | | | | | | MS2 | | | | | | | | | | | | | | | | | | |
| 2.4. ISO & CSC certification | | | | | | | | | | MS2 | | | | | | | | | | | | | | | | |
| 2.5. Logistics tools | | | | | | | | | MS2 | | MS3 | | MS4 | | | | | | | | | | | | | |
| WP3- LOGISTICS VALIDATION | | | | | | | | | | | | MS3 | | | | | | | | | | | | | | |
| 3.1. Zbox V4 manufact. | | | | | | | | | | | | MS2 | | MS3 | | | | | | | | | | | MS5 | |
| 3.2. Validation partners optimizations | | | | | | | | | | | | MS3 | | | | | | | | | | | | | | |
| 3.3. Logistics validation | | | | | | | | | | | | MS3 | | | | | | | | | | | | | | |
| 3.4. PAYS validation | | | | | | | | | | | | MS3 | | | | | | | | | | | | | | |
| WP4 TECHNOLOGY TRANSFER | | | | | | | | | | | | | | | | | | | | | | MS6 | | | | |
| 4.1. Zbox 40' | | | | | | | | | | | | | | | | | | | | | | MS6 | | | | |
| 4.2. Zbox Swap body | | | | | | | | | | | | | | | | | | | | | | MS6 | | | | |
| WP5. DISS. & COMM. | MS7 | | | | | | | | | | | | | | | | | | | | | | | | | |
| 5.1. General Dissemination | MS7 | | | | | | | | | | | | | | | | | | | | | | | | | |
| 5.2. Fairs & Events | MS7 | | | | | | | | | | | | | | | | | | | | | | | | | |
| 5.3. F2F visits | MS7 | | | | | | | | | | | | | | | | | | | | | | | | | |
| 5.4. Communication | MS7 | | | | | | | | | | | | | | | | | | | | | | | | | |

IMPACT KPI's

Zbox Blue Logistics project key performance indicators of impact are:



Contact details:
Miguel Navalón
mnavalon@navlandis.com
+34 647 701 196

zboxbluelogistics.com

